

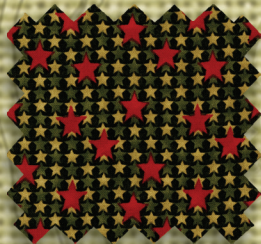
BOY SCOUTS OF AMERICA®  
Fabric Collection



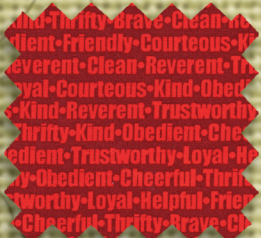
On the Go  
Messenger  
bag



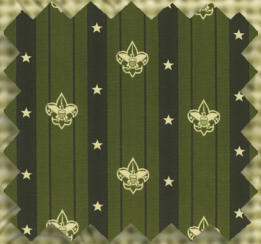
ABT-9141-49 OLIVE  
1/2 yard



ABT-9145-214 KHAKI  
7/8 yard



ABT-9139-3 RED  
1/2 yard



ABT-9142-7 GREEN  
1/3 yard

\*For applied "Troop" numbers, use fabric ABP-9138.



A carryall for gear or books, this bag is easy to sew and personalize with simple use of the emblem and number fabric.

ROBERTKAUFMAN  
F A B R I C S

download this and other FREE patterns at: [www.robertkaufman.com](http://www.robertkaufman.com)

Boy Scouts of America®, the Universal Emblem, are either registered trademarks or trademarks of the Boy Scouts of America in the United States and/or other countries. Manufactured under license. All rights reserved.

# On the Go Messenger Bag

Messenger Bag approximate size- 12" x 10" x 3"

Please read all instructions before starting. Assemble bag using 1/2" seam allowances

## Yardage:

Fabric A: 1/2 yard of ABT 9141-49  
Fabric B: 1/3 yard of ABT 9142-7  
Fabric C: 7/8 yard of ABT 9145-214

Fabric D: 1/2 yard of ABT 9139-3

Batting: 1/2 yard

## Cutting:

Cut two 11" x 13" pieces for the bag front and back.  
Cut two 4" x 11" pieces for the bag sides and one 4" x 13" piece for the bag bottom.  
Cut two 13" x 14" pieces for both sides of the flap. Cut two 11" x 13" pieces, two 4" x 13" pieces and two 4" x 11" pieces for the lining. Cut four 6-1/2" x 8-1/2" pieces for the two inner pockets.  
Cut two 2-1/4" x width of fabric strips for the flap binding. Cut one 8" x 42" strip for the strap. Note: Measure the user to see if you need to make this strip longer.  
See instructions to cut.

## Assembly Directions:

- 1) Layer the two 11" x 13" Fabric A Front & Back panels, two 4" x 11" Fabric B Side Panels and one 4" x 13" Fabric B Bottom Panel with a piece of batting and quilt as desired. Trim up each panel so the batting is even with the fabric edge.
- 2) Layer the two 13" x 14" Fabric C Flap panels, wrong side together with a piece of batting in the middle and quilt as desired for the bag flap. Use the two 2-1/4" x WOF Fabric D strips and bind as desired, down each side and across the bottom edge of the flap (fig. 1). Set aside.
- 3) To make one strap, measure the 8" x 42" Fabric D strip on the user to make sure it is long enough. If it needs to be longer, cut a second 8" x WOF strip and piece the two 8" strips together. Cut the strip to the desired length, leaving an extra 1" on each end to sew into the seam.
- 4) Fold the 8" strip in half lengthwise and press a center line. Open the folded strip and fold the long side edges of the strip in, aligning them with the center line and press. Fold the strip in half a second time and press to make one 2" x desired length strip with finished side edges. Open the folded strip and slide a 2" x desired length strip of batting into the folds of the strap. Refold the strip and top stitch down each long side to complete the strap.
- 5) Starting and stopping 1/2" from each edge of the quilted 4" x 13" Fabric B Bottom Panel, sew the Fabric A Front Panel to the Bottom Panel (fig. 2). Repeat to sew the Fabric A Back Panel to the Bottom Panel.
- 6) Center and pin the quilted strap from Step three onto one quilted Fabric B Side Panel, extend the strap 1" past the bottom edge of the side panel (fig. 3). Top stitch the strap in place. Repeat with the other end of the strap and the second side panel.
- 7) Starting and stopping 1/2" from each edge of the 4" x 13" Fabric B Bottom Panel, sew one 4" x 11" Side Panel (with sewn strap) to the Fabric B Bottom Panel, making sure to catch the bottom of the strap in the seam. Repeat to sew the second 4" x 11" Fabric B Side Panel to the Fabric B Bottom Panel.
- 8) Starting at the sewn point on each corner of the Bottom Panel, sew up the side seams to make the outside of the bag.
- 9) Pin the quilted flap from Step 2, right sides together, to the back of the bag and set aside (fig. 4).
- 10) Place two 6-1/2" x 8-1/2" Fabric C Pocket pieces, right sides together. Sew around the two pieces leaving a small opening for turning. Turn the sewn pocket right side out and sew the opening close. Repeat to make a second pocket.
- 10) Center one pocket on each 11" x 13" Fabric C Lining Panel. Top stitch down each side and across the bottom of the pocket to attach the pocket to the lining pieces.
- 11) Starting and stopping 1/2" from each edge of the 4" x 13" Fabric C Bottom Panel, sew the 11" x 13" Fabric C Front Panel to the Bottom Panel (fig. 2). Repeat to sew the 11" x 13" Fabric C Back Panel to the Bottom Panel.
- 12) Starting and stopping 1/2" from each edge of the 4" x 13" Fabric C Bottom Panel, sew one 4" x 11" Fabric C Side Panel to the Bottom Panel. Repeat to sew the second 4" x 11" Fabric C Side Panel to the Bottom Panel to make the Bag Lining.
- 13) Starting at the sewn point on each corner of the Lining Bottom Panel, sew up the side seams, leaving a 4" opening in one of the side seams (for turning) to make the lining of the bag.
- 14) Take the outside bag with pinned flap from Step 8 and the pieced lining from Step 13, put them right sides together, aligning the top raw edges on both pieces. Sew around the top of the bag and lining catching the bottom edge of the pinned flap in the seam. Turn the bag right side out through the opening left in the lining side. Sew the opening close.

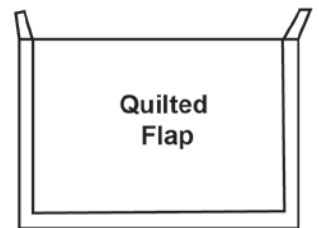


Fig. 1

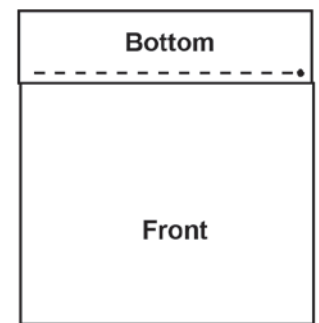
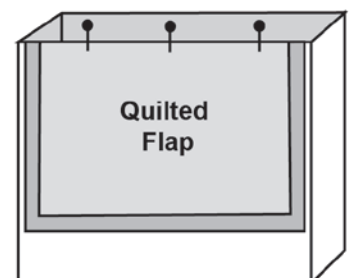


Fig. 2



Fig. 3



Bag Back  
Right side out

Fig. 4